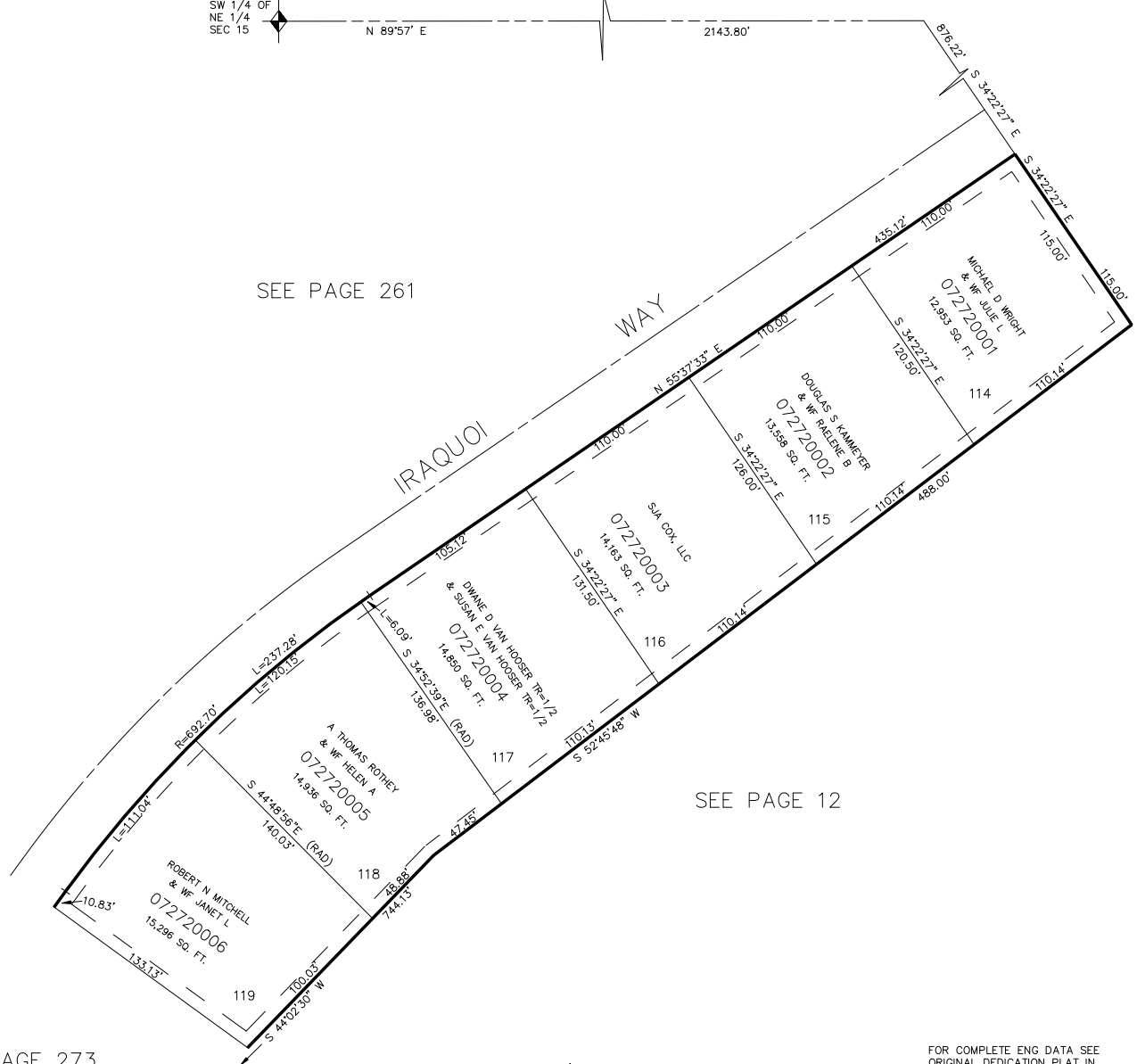
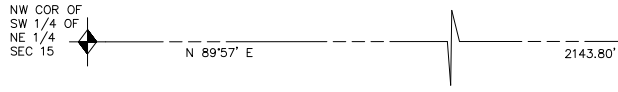


PART OF E. 1/2 SEC. 15, & N.W. 1/4 SEC. 14, T.5N., R.1W., S.L.B. & M.
SHADOW VALLEY ESTATES NO. 10

AMENDED PLAT
 LOTS 114 TO 119
 IN OGDEN CITY
 SCALE 1" = 50'

TAXING UNIT: 25



SEE PAGE 261

SEE PAGE 12

SEE PAGE 12

SEE PAGE 273

7' UTILITY & DRAINAGE EASEMENTS
 EACH SIDE OF PROPERTY LINE AS
 INDICATED BY DASHED LINES.

FOR COMPLETE ENG DATA SEE
 ORIGINAL DEDICATION PLAT IN
 BOOK 24, PAGE 29 OF RECORDS.